

## Precautions

### Installation Notes

- ▶ Install in accordance with the IEE wiring regulations and building regulations.
- ▶ This product must be installed by a suitably competent person.

### IMPORTANT

- ▶ Please read these instructions before commencing any work.
- ▶ Please retain these instructions for future reference.
- ▶ Please refer to product listing for detailed information.
- ▶ Remove all packaging before connecting to power supply.

### Electrical

- ▶ Do not connect directly to mains electrical supply.
- ▶ Switch the power off at the mains supply before installing or maintaining this fitting.
- ▶ Ensure others cannot restore the electrical power supply without your knowledge.
- ▶ Ensure the product is in good working condition. If there is visible damage do not use.
- ▶ This product must be used with a good quality constant voltage LED driver. Ensure that the voltage output of the driver matches rated voltage of the LED flex.
- ▶ Connect the LED flex with correct polarity. Refer to the 'wiring' section for help.
- ▶ Ensure that the power capacity of the LED driver is greater than the total load of all the LED flex connected to it.
- ▶ The LED flex and cable should be protected by a fuse or equivalent device installed between the driver and LED flex and as close to the driver as possible.
- ▶ Ensure that the current capacity of cable connecting the LED flex to the driver is greater than the maximum drawn by the LED flex and the cut off of any over-current protection (fuse).

### Mechanical

- ▶ Do not use the product if damaged. Do not use with worn or damaged wires or components.
- ▶ The product will generate heat during use. It should be installed in a well ventilated location on a smooth surface. Fully uncoil the LED flex. Do not cover or conceal.
- ▶ The LED flex should be mechanically supported with the recommended mounting accessories.
- ▶ Do not hang under its own weight.
- ▶ Do not twist, pull or stretch the LED flex. Only bend following the bend direction and minimum bend.
- ▶ Protect the LED flex from mechanical damage. Take care not to dislodge any components during installation. Ensure that wires connecting the LED flex cannot be pulled.

### Environmental

- ▶ The product should be used in an environment where the ambient temperature is between 0°C ~ +45°C.
- ▶ The temperature of the LED flex should never exceed 40°C when in operation.
- ▶ Connectors must be assembled correctly in order to obtain a IP65 rating. Not suitable for permanent outdoor installation.
- ▶ Only install in a location free from chemicals, gases and flammable materials.
- ▶ Avoid continuous exposure to UV light.
- ▶ Do not install in locations where it is subject to continuous movement.

### Product Warranty

1. A warranty period is provided for products in normal use. For any faults arising during the period that are confirmed to be quality related by inspection by the company, a product of the same specification will be replaced for free.
2. The warranty does not cover any of the following:
  - (1) Any product damage due to usage not allowed in the instructions.
  - (2) Any product damage due to disassembling or wrong operation by the user.
  - (3) Severe appearance damage or deformation of the product.

## LED Flex

### ▶ Essential Circular Rope

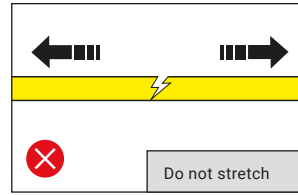
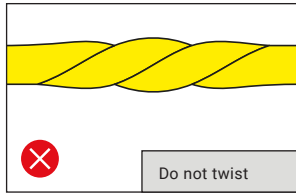
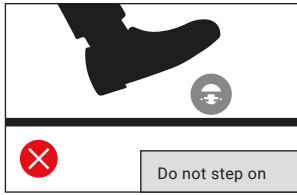
## User Manual

tagra®

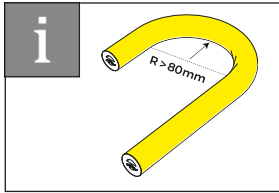


v5

## Precautions

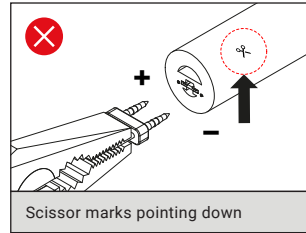
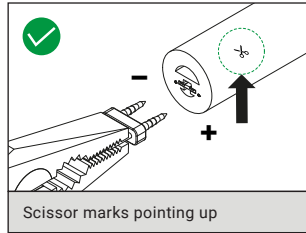


## Tolerance & Bend

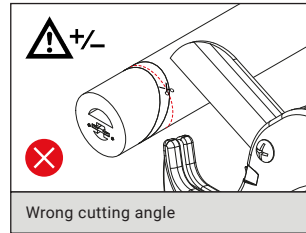
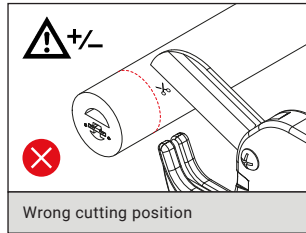
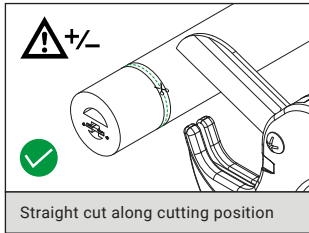


- ▶ Minimum bend radius: 80mm
- ▶ Minimum bend diameter: 160mm
- ▶ Vertical bending.

## Polarity

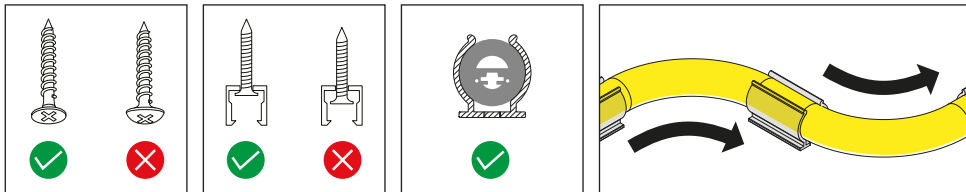


## Cutting



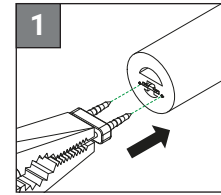
**TIP:** we recommend using a pipe cutter to cut the LED flex. Use one firm press to cut cleanly through.

## Mounting / Installation

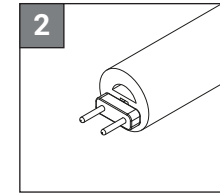


1. Install mounting channel with countersunk screws. Use appropriate fixings depending on the mounting surface.
2. Ensure that the mounting channel is securely held by the screws.
3. Install the LED flex in the correct position making sure it is properly seated in the mounting channel.
4. Use multiple mounting brackets to achieve bends and shapes with the LED flex.
5. We recommended installation be carried out by at least 2 people.

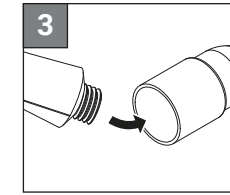
## Wiring & Sealing



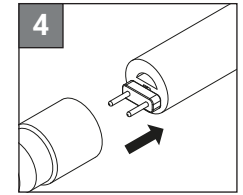
Using square-end pliers, insert the connector pins into the end of the LED flex.



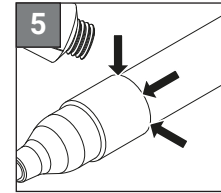
Ensure the pins are fully inserted. Test before sealing.



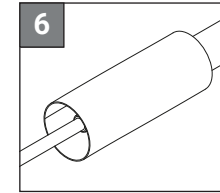
Apply glue inside the power cap and press together.



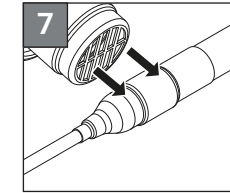
Ensure the power cap is fully seated on the connector pins.



Apply a bead of glue around the edge of the power cap.



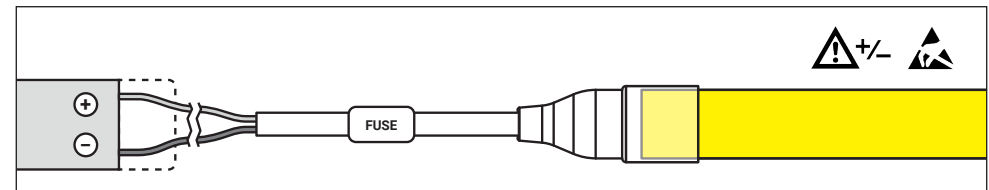
Slide over the heatshrink and position centrally over the power cap.



Warm the heatshrink until it shrinks and seals over the power cap.

**NOTE:** Test the product before sealing to ensure the polarity is correct.

**NOTE:** Allow 2-3 hours before handling and 24 hours for the glue to completely dry. Must not be exposed to moisture until the glue has completely dried. Use the correct glue. Do not use bathroom silicone sealant. Once glue has dried, inspect both ends and confirm that the endcap is fully sealed to the LED flex.



**WARNING:** This product must be installed by a suitably competent person. Check polarity (+/-) is correct before turning on. Incorrect polarity can cause damage to products.



Single Colour	
+V	Brown
-V	Blue

RGB	
+V	Black
-R	Red
-G	Green
-B	Blue

## Accessories

Description	SKU
Accessory Pack for Essential Single Colour Circular LED Flex	NEONCIRC-ACCPCK65
Accessory Pack for Essential RGB Circular LED Flex	NEONCIRC-ACCPCK-RGB65
Mid-Joint Connector for Essential Single Colour Circular LED Flex	NEONCIRC-MJOINT-ACCPCK
Mid-Joint Connector for Essential RGB Circular LED Flex	NEONCIRC-MJOINT-ACCPCK-RGB
Mounting Bracket 30mm for Essential Circular LED Flex	TL-NEONCIRC-BRACKET